



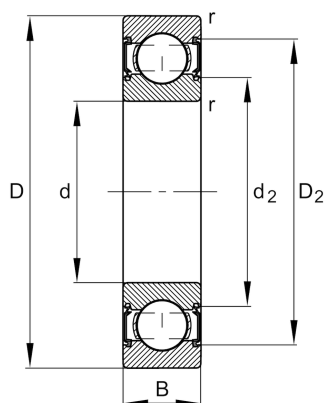
FAG

6004-C-2HRS

Deep groove ball bearing

Schaeffler ID:
0949816800000Deep groove ball bearing 60...-C-2HRS,
single row, Generation C, seals, steel
sheet metal cage

Technical information

**Main Dimensions & Performance Data**

| | | |
|----------|--------------|-----------------------------------|
| d | 20 mm | Bore diameter |
| D | 42 mm | Outside diameter |
| B | 12 mm | Width |
| C_r | 10.600 N | Basic dynamic load rating, radial |
| C_{0r} | 5.000 N | Basic static load rating, radial |
| C_{ur} | 340 N | Fatigue load limit, radial |
| n_G | 15.300 1/min | Limiting speed |
| | 0,065 kg | Weight |

Dimensions

| | | |
|-----------|---------|-----------------------------|
| r_{min} | 0,6 mm | Minimum chamfer dimension |
| D_2 | 37,4 mm | Caliber diameter outer ring |
| d_2 | 25,2 mm | Caliber diameter inner ring |

Mounting dimensions

| | | |
|------------|---------|--------------------------------------|
| d_{amin} | 23,2 mm | Minimum diameter shaft shoulder |
| D_{amax} | 38,8 mm | Maximum diameter of housing shoulder |
| r_{amax} | 0,6 mm | Maximum fillet radius |

Calculation factors

| | | |
|-------|------|--------------------|
| f_0 | 13,8 | Calculation factor |
|-------|------|--------------------|

Temperature range

| | | |
|-----------|--------|----------------------------|
| T_{min} | -20 °C | Operating temperature min. |
| T_{max} | 100 °C | Operating temperature max. |

